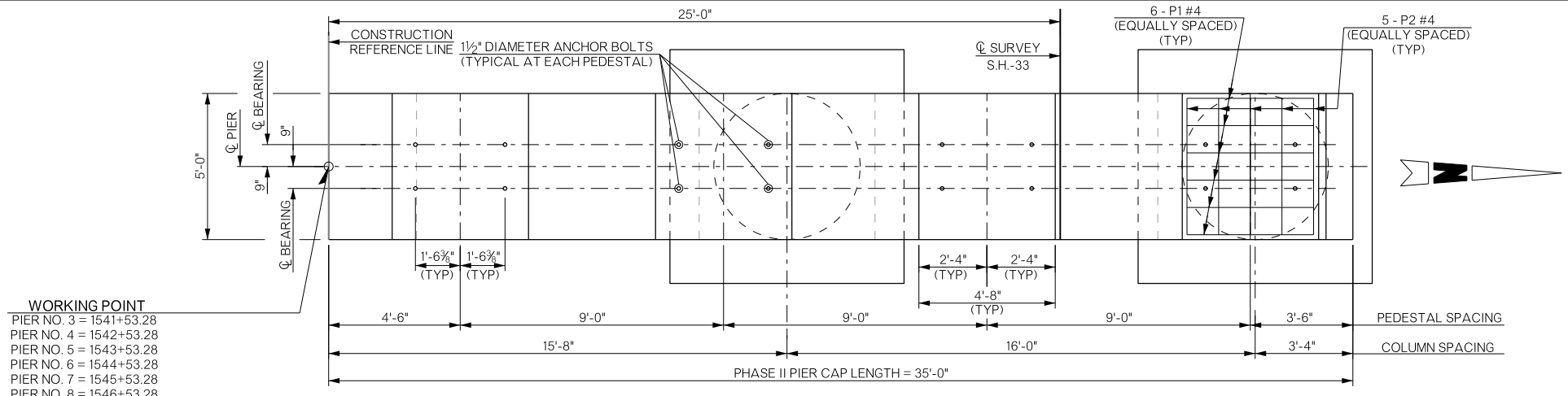
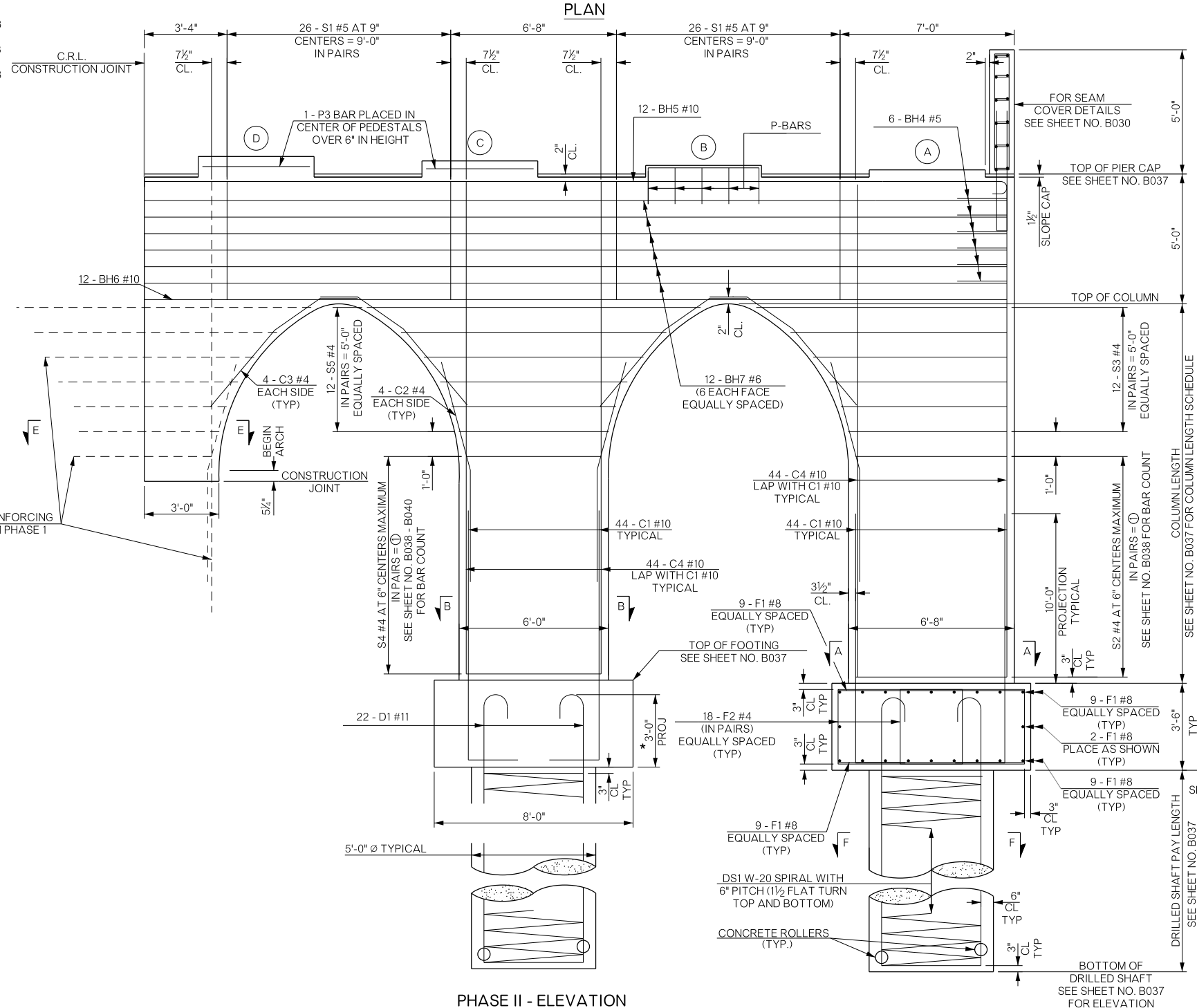
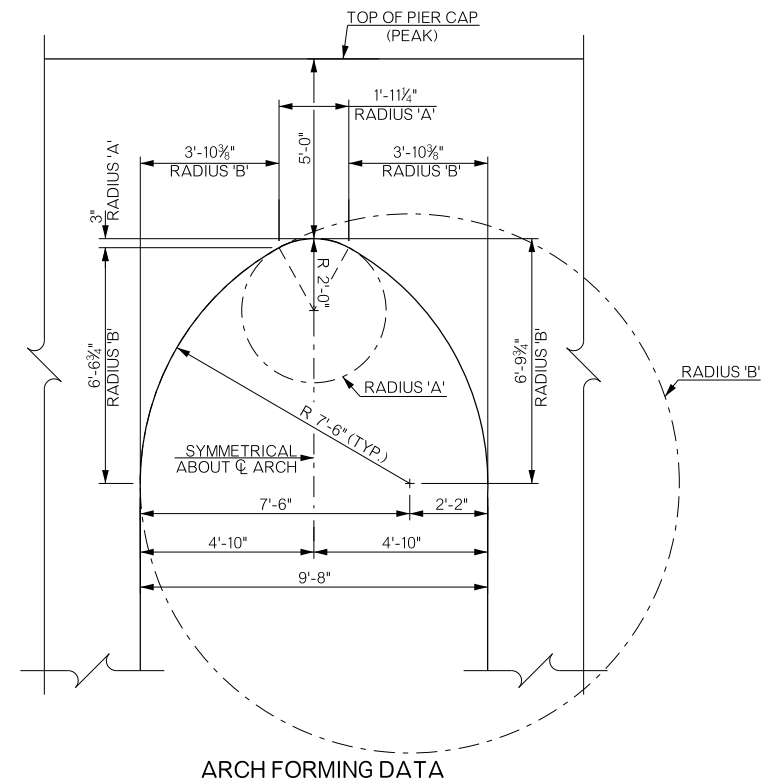


REVISIONS		
REV. NO.	DESCRIPTION	DATE



- WORKING POINT**
- PIER NO. 3 = 1541+53.28
 - PIER NO. 4 = 1542+53.28
 - PIER NO. 5 = 1543+53.28
 - PIER NO. 6 = 1544+53.28
 - PIER NO. 7 = 1545+53.28
 - PIER NO. 8 = 1546+53.28
 - PIER NO. 9 = 1547+53.28
 - PIER NO. 10 = 1548+33.28
 - PIER NO. 11 = 1549+33.28
 - PIER NO. 12 = 1550+33.28
 - PIER NO. 15 = 1553+18.28
 - PIER NO. 16 = 1554+33.28



LOCATION	LENGTH
PIER NO. 3	2'-6"
PIER NO. 4	5'-0"
PIER NO. 5	7'-6"
PIER NO. 6	10'-6"
PIER NO. 7	12'-6"
PIER NO. 8	14'-6"
PIER NO. 9	16'-0"
PIER NO. 10	17'-6"
PIER NO. 11	17'-6"
PIER NO. 12	14'-6"
PIER NO. 15	16'-0"
PIER NO. 16	16'-0"

NOTES: * ANY PROJECTED LENGTH PAST TOP OF DRILLED SHAFT SHALL NOT BE CONSIDERED ADDITIONAL PAY LENGTH FOR DRILLED SHAFT

PENETRATING WATER REPELLENT TREATMENT SHALL BE APPLIED TO THE TOP OF THE PIER CAP AND SEAM COVER, INCLUDING ALL SURFACES OF THE PEDESTALS, ALL VERTICAL FACES OF THE PIER CAP AND SEAM COVER.

ALL EDGES OF PIER CAP SHALL HAVE A 1 1/2" CHAMFER EXCEPT FOR PEDESTAL EDGES WHICH SHALL HAVE A 3/4" CHAMFER.

FOR DETAILS OF ROLLER INSTALLATION AND ROLLER PLACEMENT, SEE SHEET B033.

FOR DETAILS OF SPIRAL REINFORCING SPLICE, SEE SHEET B033.

FOR DETAILS OF PIER AESTHETIC TREATMENTS, SEE SHEET B045.

FOR DETAILS NOT SHOWN ON THIS SHEET, SEE SHEETS B034 - B040.

BRIDGE "A" SH-33 OVER COTTONWOOD CREEK LOGAN COUNTY DETAILS OF PIERS NO. 3 - 12,15,16 (SHEET 2 OF 7)	Design	GT	11/15
	Detail	TIS	2/16
	Check	TT	8/16
STATE OF OKLAHOMA DEPARTMENT OF TRANSPORTATION JOB PIECE NO. 21860(04)		SQUAD: PEARSON ENGR: HERNANDEZ SHEET NO. B035	